

Kerrier Way, Camborne

Gateway Art Commission Brief

February 2024 - Rev 1



MEI LOCI

Page left blank for double sided printing

Introduction

Project and Site Overview

The Kerrier Way project will create a new public greenspace across what is currently a neglected, underused site, at the edge of Camborne Town Centre. The landscape proposals include for opportunities for interpretive art features, including bespoke features incorporated within the site entrance ways. This document forms a brief for a design/ art commission covering the gateway areas into the greenspace

The new greenspace located close to Camborne Town Centre, forming a gateway landscape to one of the key approach routes into the town. Despite this relatively prominent location, the site is currently in a neglected state, having being left undeveloped and largely unmaintained since demolition and remediation of the Holmans Works site were completed in 2011.

The proposals seek to develop the site as a public greenspace , so that this key location can contribute in terms of townscape aesthetics and interest, and provide amenity and recreational value to local residents. The sketch proposals went to public consultation in autumn 2022, with the results from this feeding into the current proposals.



Aerial view of the wider area, with the site outlined in red

Historical Context

Brief Summary of Site History

The Site has a rich industrial and cultural history. The Roskear Branch Rail Line previously crossed through the site along its western boundary, a mineral branch of the Truro - Penzance line which opened in 1843 and was finally closed in 1987 (though the rail line through the site was closed before this).

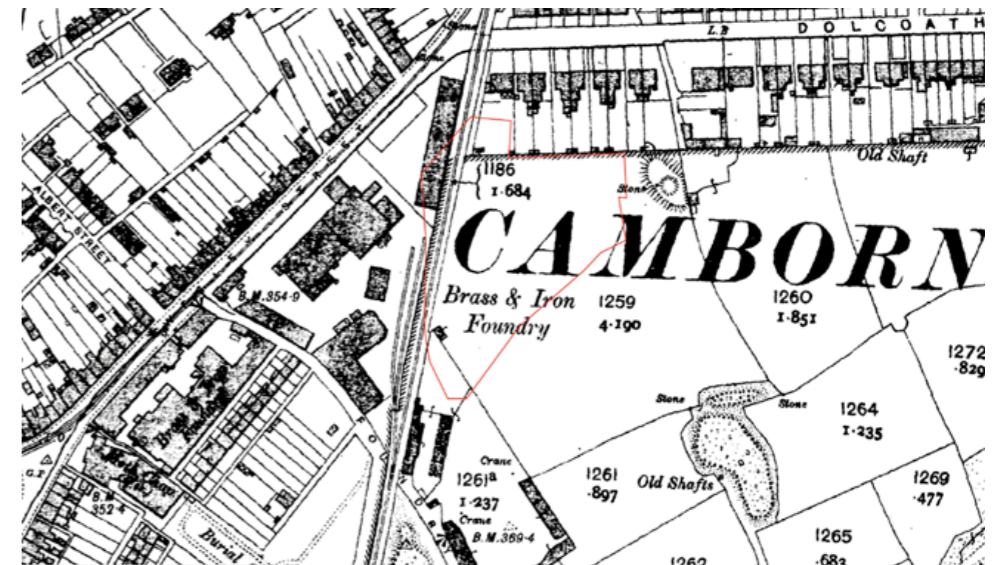
More recently, the site formed part of the CompAir Holman Works which manufactured machinery associated with engineering and metal working, including rock drills, compressors and mining equipment. Holman brothers started as a local, family run business and were later acquired by CompAir UK Ltd. The firm employed around 3,500 staff at its peak, spread across three sites in Camborne.

Manufacturing continued on site until 2003, when the factory finally closed, with the main buildings being demolished in 2006/ 2007, although one building which occupied the western greenspace was retained and used by the NHS until 2010.

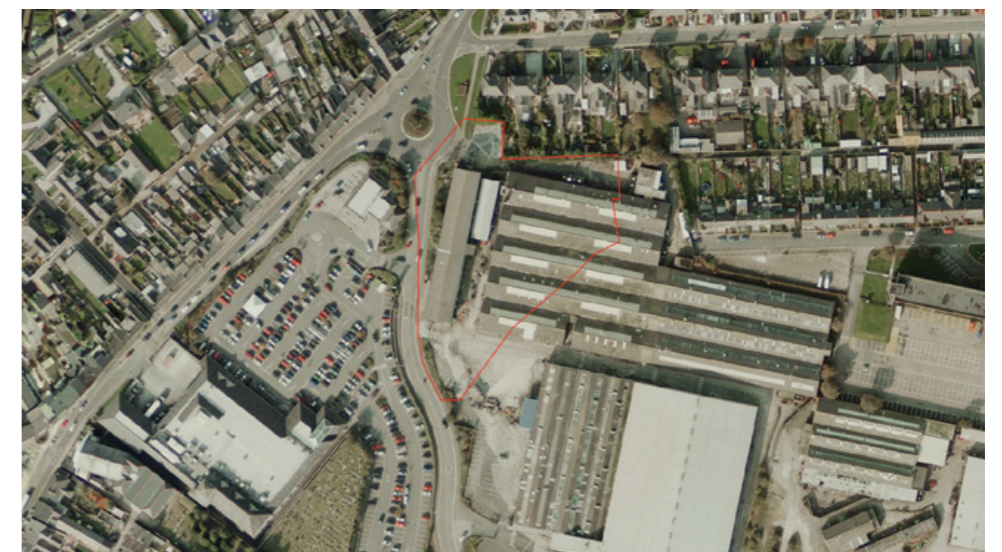
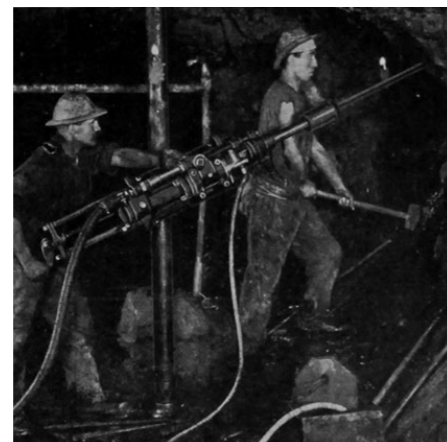
This relatively recent site use not only represents a key part of Camborne's history, but will also form part of the living memories of a large number of local residents, and no doubt will have hosted significant events and moments in people's lives. The artwork features provide opportunities for elements of this history to be recorded and passed on to future generations.



Late 1800 OS (Town Plans) - shows rail line through west of site



1906 - 1908 OS (Epoch 2) - shows existing housing north and foundry west



2005 aerial photo - shows CompAir Holman Works occupying site

MEI LOCI

Objectives and Brief for Overall Greenspace

The greenspace enhancements are funded through the Camborne Town Deal. As part of the overall town-wide enhancements, Kerrier Way Greenspace has been selected to contribute to the following Outputs & Outcomes of the Town Deal:

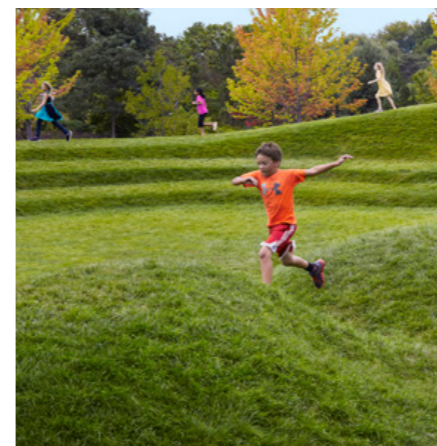
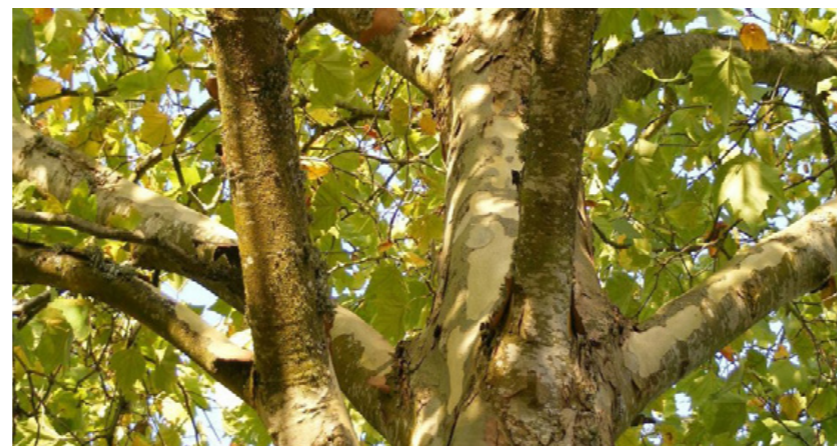
- Remediation and/or development of 11 abandoned or dilapidated sites
- Development of 1,000sqm of new public space
- Significant health outcomes

The overview of the project proposal within the original client's brief document was outlined as follows:

"... The Kerrier Way Project will create a community green space, which will not only provide a peaceful, green sanctuary for community wellbeing, but also allow for performance, education events and social interaction in the landscape. This project will transform two areas of unattractive scrubland, in a prominent location for the town, into a green gateway to the commercial centre of Camborne, which is not just aesthetically beneficial, but will encourage investment into the town, help build stronger community cohesion and contribute towards national and local strategies to combat climate change..."

Other aims covered in the brief were to create *"... an attractive green space with landscaped seating areas for tranquil space away from it all."*, *"... improve air quality in an area that has high pollution levels."* and *"... create a green gateway for the town centre, with planting that will deliberately enhance the threshold 'arrival experience'..."*. Potential for play provision and/ or an outdoor theatre were also noted.

Aside from this project brief, the design team has been very aware of the need for a multifunctional space that will meet the wide ranging (and evolving) needs of the local people, for a sustainable and long-term future. The significance of the site's history, and extent of change that it has recently seen, also feels like an important story to acknowledge and record, and can help make the site unique and reflective of locality. Importantly, the need for urban greening and habitat is immediately apparent, where public realm green infrastructure seems sparsely provided for in the immediate area.



Gateway Art - Overview and Delivery

Key features in design scope

The key artwork/ bespoke features proposed for the gateway areas are as follows:

- Art/ bespoke features embedded into the hard surfacing (e.g. embedded metal,)
- Art/ bespoke design included within concrete plinth seating (etched or embossed)

The art is intended to provide an additional level of interest and aesthetic appeal to the greenspace, as well as interpretation and storytelling relating to the site history and/ or the local area. It can also bring additional sensory experiences to the space (touch)

Consultation

The commissioned artist/ group will be expected to deliver a public consultation/ engagement process (working together with Camborne Town Council and Meiloci Landscape Architects), to inform the overall theme and the design development. Consultation approaches should be tailored engage a wide demographic of the local community and encourage creative participation. The program and method of public consultation should be agreed with Camborne Town Council's Community Team.

Final Design Development and Implementation

The final designs will need to be developed in collaboration with the landscape architect (Meiloci) and end fabricator (e.g. Insteel) to ensure that they meet considerations such as robustness, health and safety considerations (e.g. slip or trip hazards) and budgetary or technical constraints.

Final designs will need to be provided in a digital format suitable for lazer/ machine cutting (e.g. clean polylines in Autocad/ .dwg format). Alternatively Meiloci would be able to provide this drafting service, subject to a reduction being made in the value of the commission to cover their time.

At this stage it is intended that the final art pieces will be fabricated/ cast by other suppliers (e.g. Insteel for metal elements, Cornish Concrete Products for precast elements) and installed by the main contractor delivering the works. Depending on the nature of the art/ materials, however, we may be open to discussions whereby the artist would cover the fabrication/ creation of the features through a separate commission (to be discussed/ agreed)



01 GATEWAY ART - KEY ELEMENTS (INDICATIVE)
6001 not to scale

Gateway Art Commission - Key Elements

Art within surfacing

Each of the gateway areas contains a roughly circular area of paving, open to the pavement and surrounded by planting and seating. These areas vary in size between 3.4 and 7m in diameter. These areas are proposed to be surfaced with a resin bonded finish, using a light coloured buff/ sliver grey aggregate.

The current preferred approach would be to include art within these areas through embedded metal (e.g. corten or stainless steel) which could either be cut from solid plate or bent to shape (to suite the design/ desired outcomes). Other options for incorporating art in the surfacing could be explored (e.g. using stone or ceramic, or cast items) subject to robustness, practicality and budget

Proposals could include motifs, simple “two tone” images (like you could achieve with a stencil or stamp) or wording, with potential for storytelling, interpretation and place making.

The following would need to be considered when developing the designs:

- Keeping the proposals/ designs relatively simple, so they will be legible across the relatively large areas and practical to fabricate/ implement
- Consideration to potential trips hazards (e.g. through uneven surfaces) or slip hazards (e.g. through larger areas of flat steel plate), along with other potential hazards (e.g. sharp edges)
- Limiting the extend of the art features over just a portion of the available space (e.g. 20 - 40% depending on the intricacy and nature of the design), based on budget considerations
- Robustness and practicality of build



Gateway Art Commission - Key Elements

Art on precast seating

The precast plinth seating proposed in the gateway areas provide opportunity for art to be incorporated on their vertical faces (and potentially the bench tops), which can be incorporated by adapting the moulds used in manufacture.

Embossed/ inset designs could be used, where the image/ text/ design is recessed from the main surface. This can be done by sicking a thin cut-outs onto the inside of the mould (e.g. rubber sheets/ ply). This method has the advantage of producing a tactile surface.

Etched designs show the image/ text design through a different finish, with the “picture” elements rougher and with more exposed aggregate than the adjacent surface. it can be more subtle of than embossing (though can still be effective). This can be done by printing the design on a special “paper” which is stuck on the inside of the mould.

Again the proposals could include motifs, simple “two tone” images (like you could achieve with a stencil or stamp) or wording. It would make sense for any interpretation/ storytelling to tie in with the overall theme/ message for that gateway area.

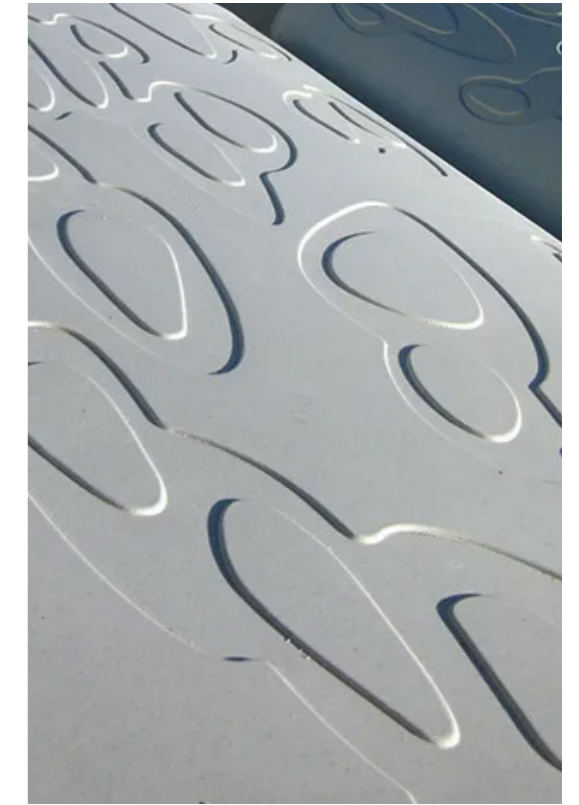
There are other options for incorporating art within the benches that could be explored/ discussed (subject to practicality, robustness and budget)

The following would need to be considered when developing the designs:

- Keeping the proposals/ designs relatively simple, so they will be legible and practical to implement
- If art is proposed into the bench tops - consideration to comfort and puddling
- Potentially limiting the extent or level of detail of the art, based on budget considerations
- Consideration to tactile/ sensory qualities



embossed/ inset designs



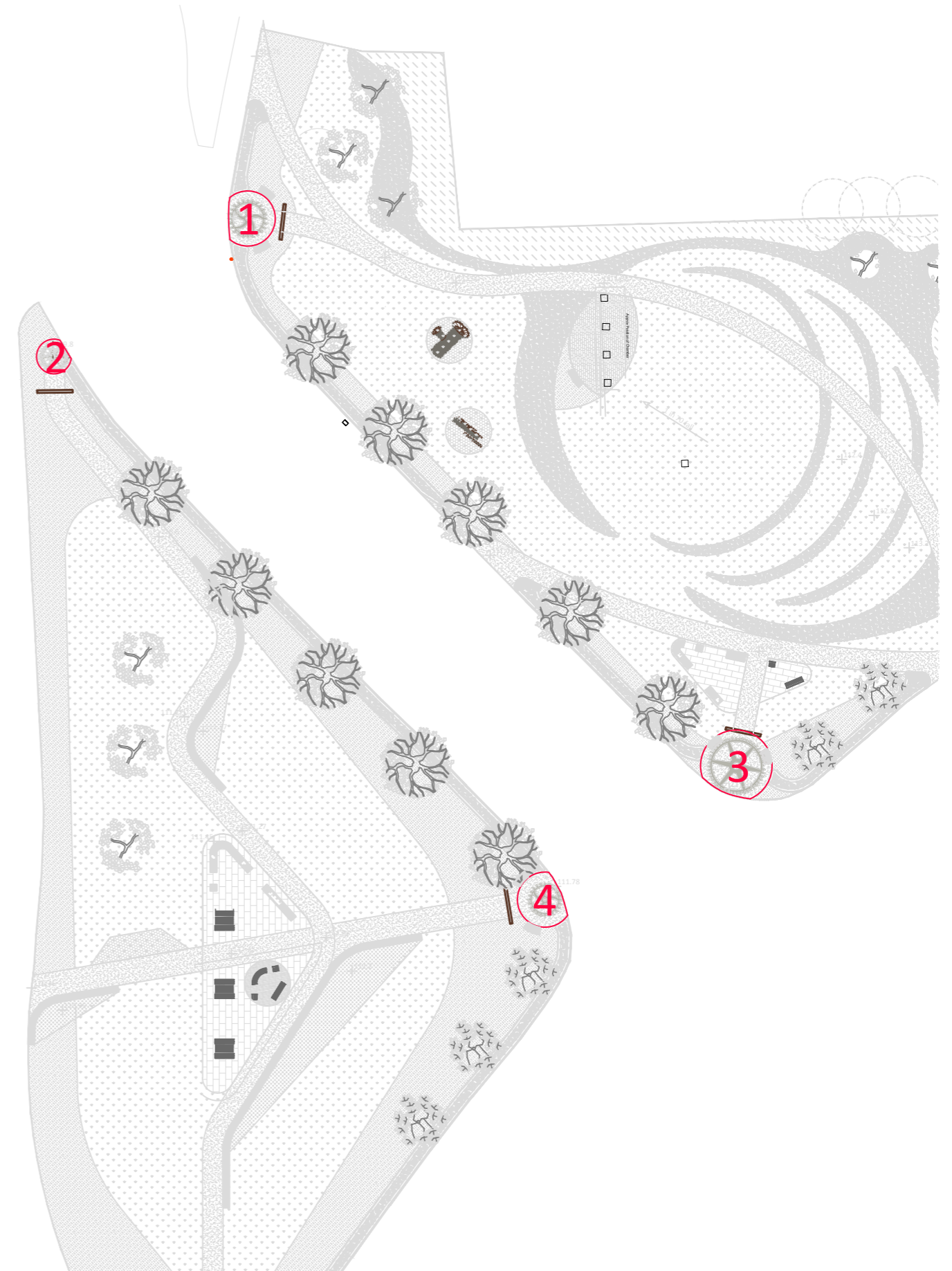
etched designs



Gateway Locations and Details

In total, there are entrance ways where the artwork is intended to be incorporated (shown in plan to right):

- Entrance 1 (see numbering on plan to right):
 - Total area or surfacing available for artwork 20.2m² (within 5.4m diameter circle)
 - 2nr Concrete plinth benches - up to 1m² of artwork for each bench to cover front and sides (400 x 2400mm total face)
- Entrance 2:
 - Total area or surfacing available for artwork 8.53m² (within 3.4m diameter circle)
- Entrance 3:
 - Total area or surfacing available for artwork 34.1m² (within 7m diameter circle)
 - 2nr Concrete plinth benches - up to 1m² of artwork for each bench to cover front and sides (400 x 2400mm total face)
- Entrance 4:
 - Total area or surfacing available for artwork 19.5m² (within 5.4m diameter circle)
 - 2nr Concrete plinth benches - up to 1m² of artwork for each bench to cover front and sides (400 x 2400mm total face)



Landscape Proposals

Landscape Colour Plan



Illustrative Landscape Colour Plan

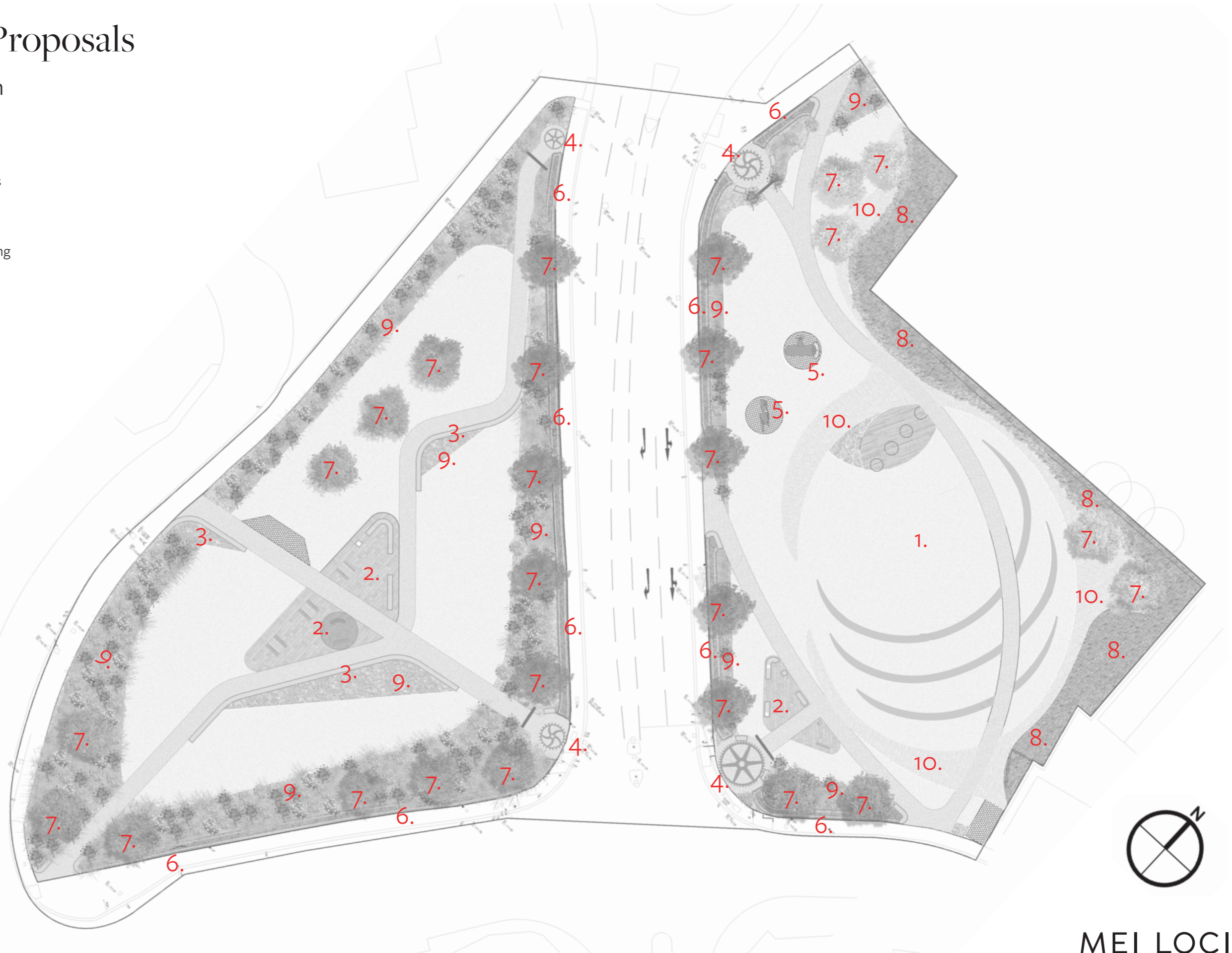


MEI LOCI

Landscape Proposals

Landscape Key Plan

1. Informal grass amphitheatre
2. Communal seating areas
3. Seating edge walls
4. Entrance features
5. Interpretive artwork features
6. Cornish hedge banks
7. Tree Planting
8. Edible scrub planting
9. Amenity and Sensory Planting
10. Wildflower meadow



Landscape Key Plan

Landscape Proposals

Indicative Visualisations



View towards the proposed Kerrier Way western greenspace and the communal seating areas



View along Kerrier Way with indicative Cornish hedging, avenue tree planting, entrance arches and seating plinths