

“A new space for the community, for People, for Health and for Nature”

# Park Gerry Revitalisation Masterplan

## Dynamic Community Recreation Areas

The northern fields in Park Gerry will host sport-focused areas, conveniently accessible from the northeast car park and the east cycle/pedestrian link. This approach ensures the southern fields remain dedicated to quieter activities.

Newly constructed facilities include a wheeled sports facility with a spectator section, a multi-use games area, and outdoor gym and social spaces.

The football pavilion will provide access to changing and food preparation facilities housed in the new community hub building.

- 1 Skatepark
- 2 Mixed Use Games Area
- 3 Community hub building
- 4 Football pitch (full size)
- 5 Sensory gardens / gateway
- 6 Gym equipment
- 11 Main car park
- 12 Overflow car park



Accessible pathways connect these spaces, offering various seating options, some with overhead shelters, promoting social interaction for all. An eastern entrance features a sensory garden celebrating the town’s culture and heritage, acting as a welcoming gateway to the park.



The park’s open, wooded edge ambiance is preserved around the sports areas, featuring open green spaces and augmented tree planting throughout.

A newly established perimeter path connects different areas within the park, providing seating for spectators. Additionally, bike stands are strategically placed to encourage visitors who are connected to the park through new cycle path links.

“A new space for the community, for People, for Health and for Nature”

# Park Gerry Revitalisation Masterplan

## Natural Habitat and Wildlife Areas

The southern field in Park Gerry is designed with nature and wildlife in mind, and for quieter, tranquil activities, with enhanced planting areas for habitats and biodiversity.

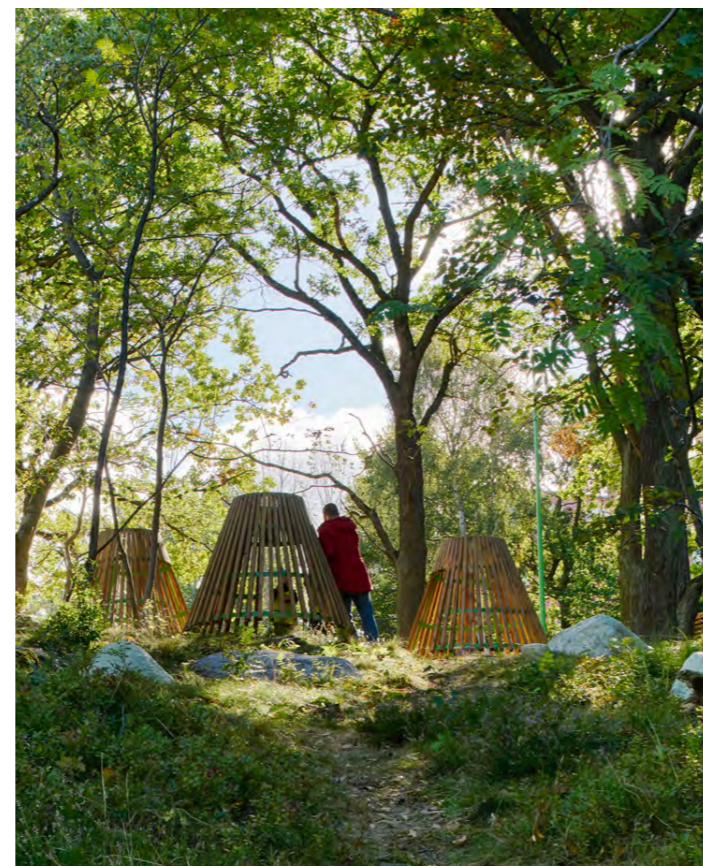
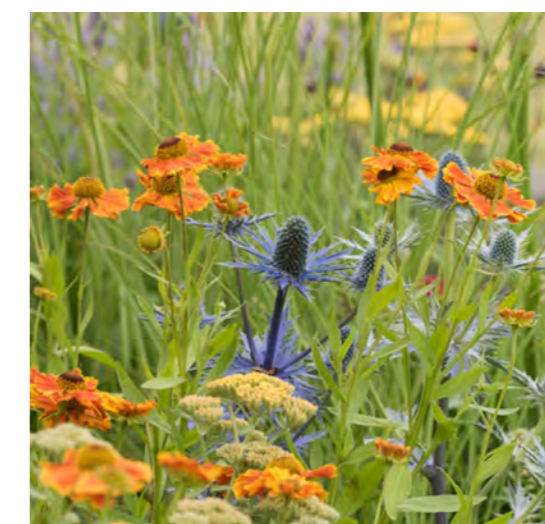
Additional tree planting offers screening, enriching the landscape without enclosing it. Cultural interpretation is provided through sculptures made from natural woodland materials.

Natural play structures, benches, and picnic areas are strategically placed along the accessible perimeter path, weaving through wild flower patches to attract pollinators and wildlife, creating an inclusive, beautiful space for nature and for people.

- 7 Wildflower ‘round’
- 8 Picnic areas along path in patches of wildflower meadow
- 9 Natural play equipment set in patches of wildflower meadow
- 10 Nature path running perimeter of field



A new perimeter path links the meadow space to the rest of the park.



Open meadows with wildflower patches create a biodiverse environment for exploration, play, rest, socializing, and reconnecting with nature.

A wildflower ‘round’ offers a space for performances or informal gatherings.

“A new space for the community, for People, for Health and for Nature”

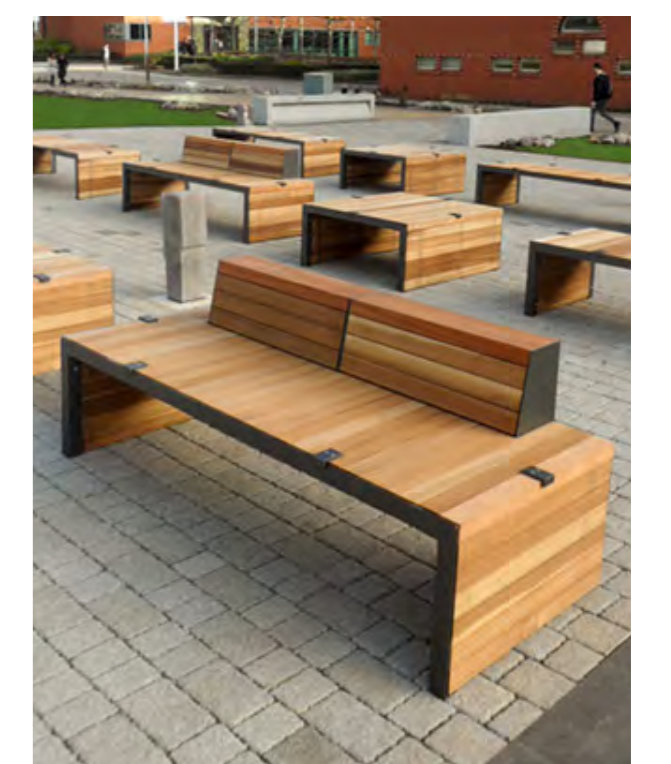
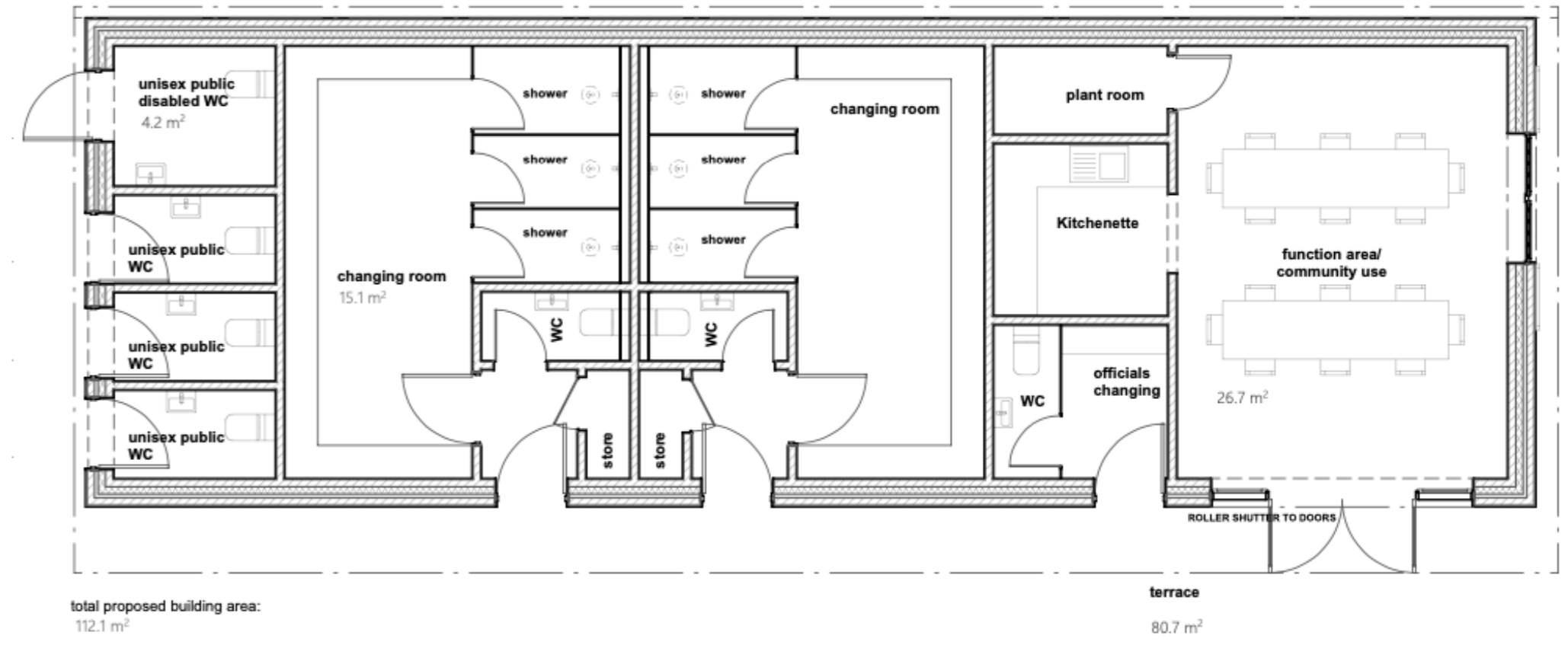
# Park Gerry Revitalisation Masterplan

## Community Hub Building

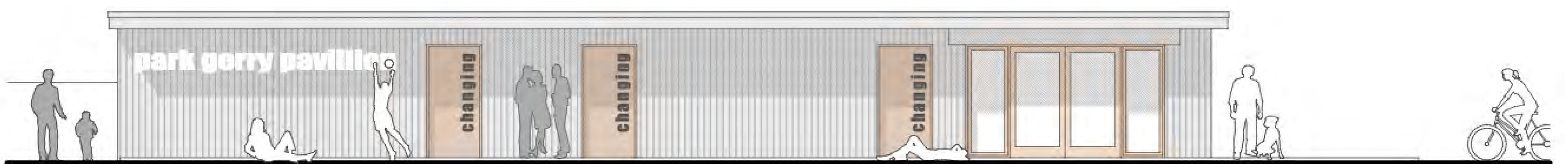
The Pavilion Community Hub will be a versatile space available for community and sports groups for events. Designed to meet the needs of the local community and attract visitors from afar, the proposals allow for future expansion with additional floor plans.

The hub will include both indoor and outdoor seating, storage facilities for movable furniture, a kitchen for food and drink preparation, and changing facilities with showers for football matches. Fully accessible public conveniences are situated here, accessible even when the main community hub is closed.

Overlooking the football pitch, is grassed amphitheatre-style terraced spectator seating.



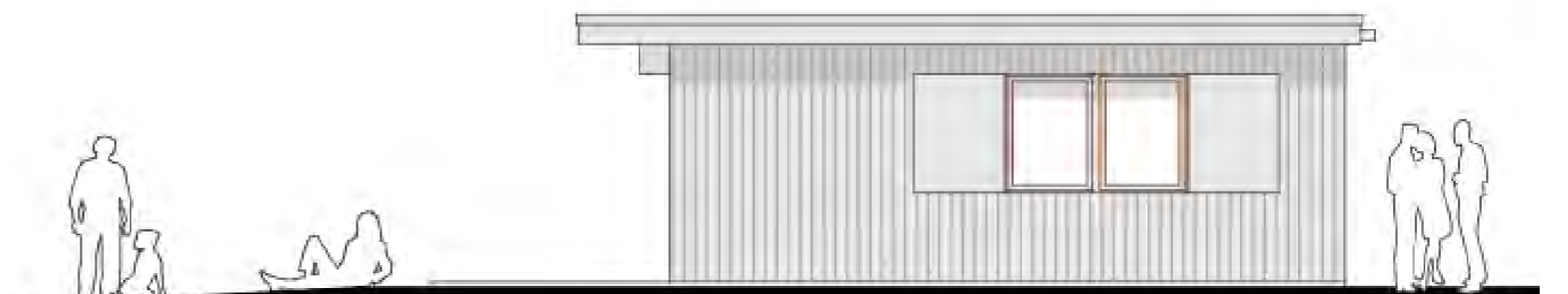
The building to be clad in corrugated steel, reflecting the industrial mining heritage, with vibrant splashes of color for a contemporary, energizing, yet earthy feel that complements the parkland setting.



South elevation



East elevation



West elevation



MEI LOCI